

20 STRATH AVENUE

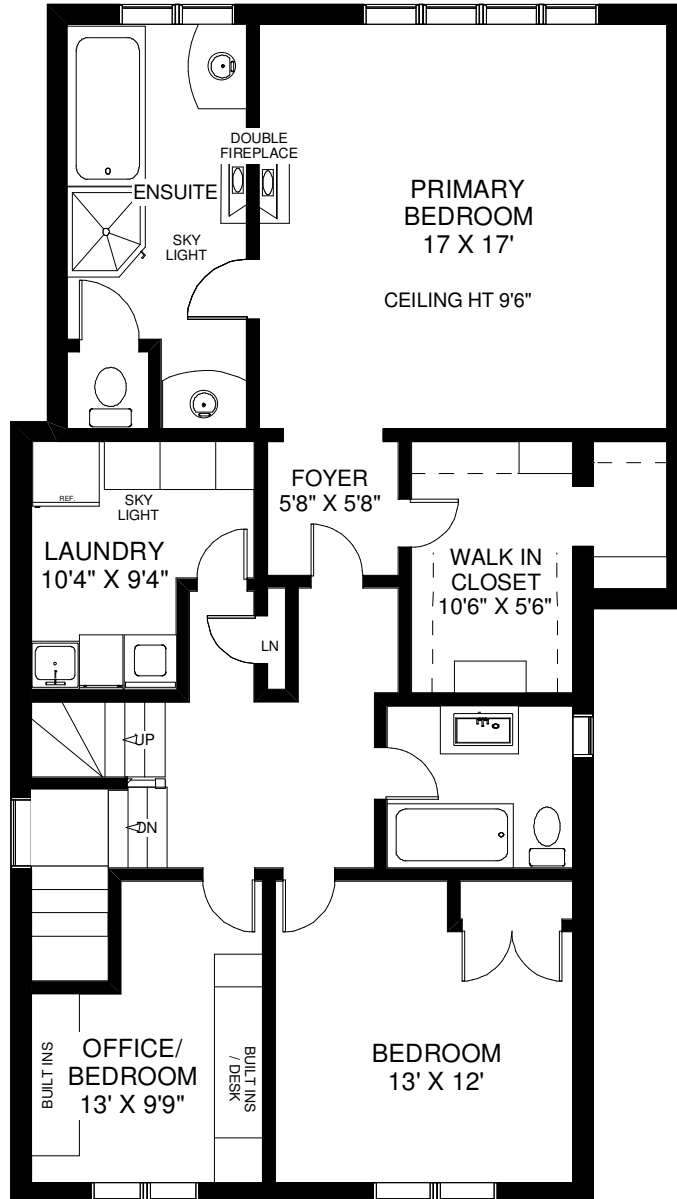


MAIN FLOOR
APPROXIMATELY 1,329 SQ FT

LOWER FLOOR
APPROXIMATELY 1,329 SQ FT

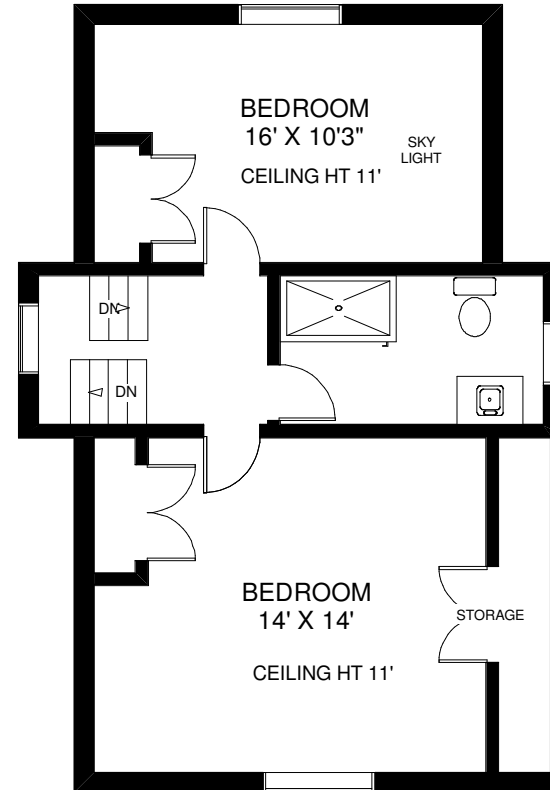
Note: Measurements & Calculations are approximate. Provided as a guideline only.

20 STRATH AVENUE



CEILING HT 8'

SECOND FLOOR
APPROXIMATELY 1,329 SQ FT



THIRD FLOOR
APPROXIMATELY 729 SQ FT

Note: Measurements & Calculations are approximate.
Provided as a guideline only.