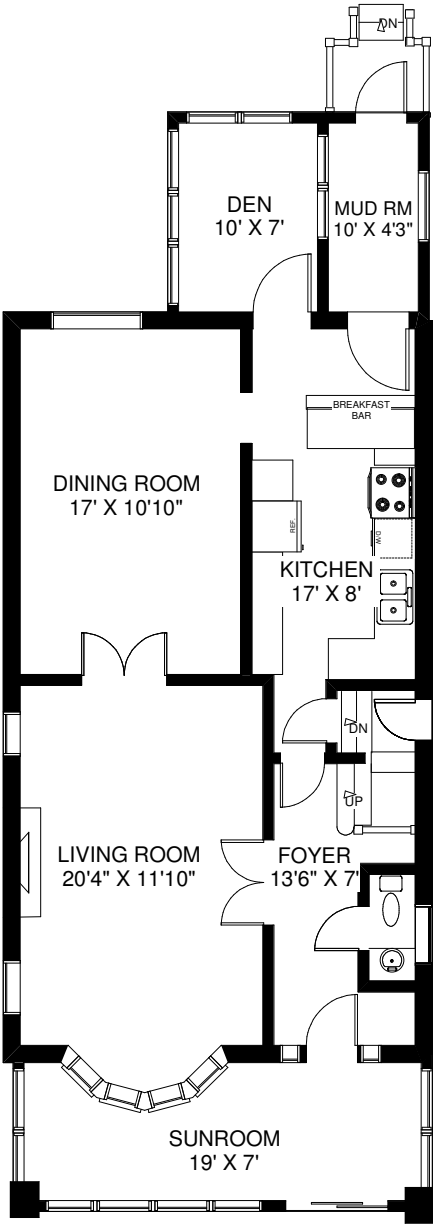
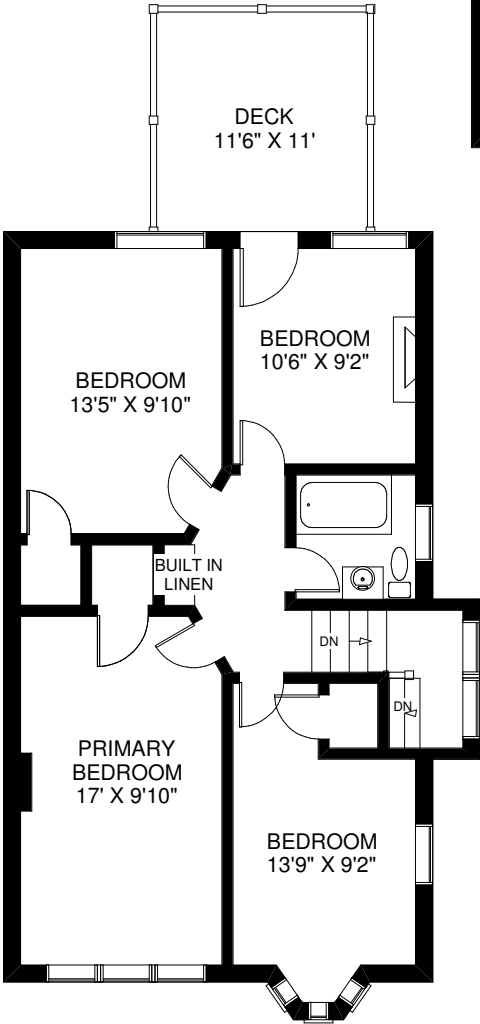


267 BERESFORD AVENUE



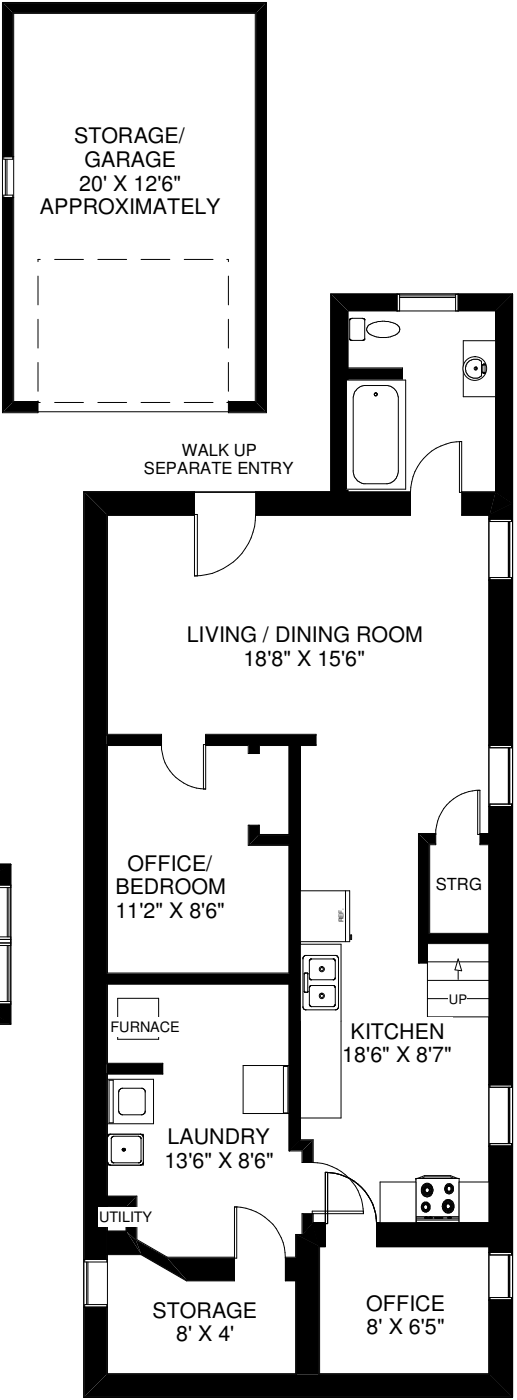
CEILING HT 8'4"

MAIN FLOOR
APPROXIMATELY 1,050 SQ FT



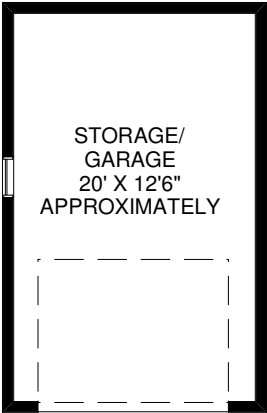
CEILING HT 8'2"

SECOND FLOOR
APPROXIMATELY 800 SQ FT



CEILING HT 6'8"

LOWER FLOOR
APPROXIMATELY 1,020 SQ FT



Note: Measurements & Calculations are approximate. Provided as a guideline only.