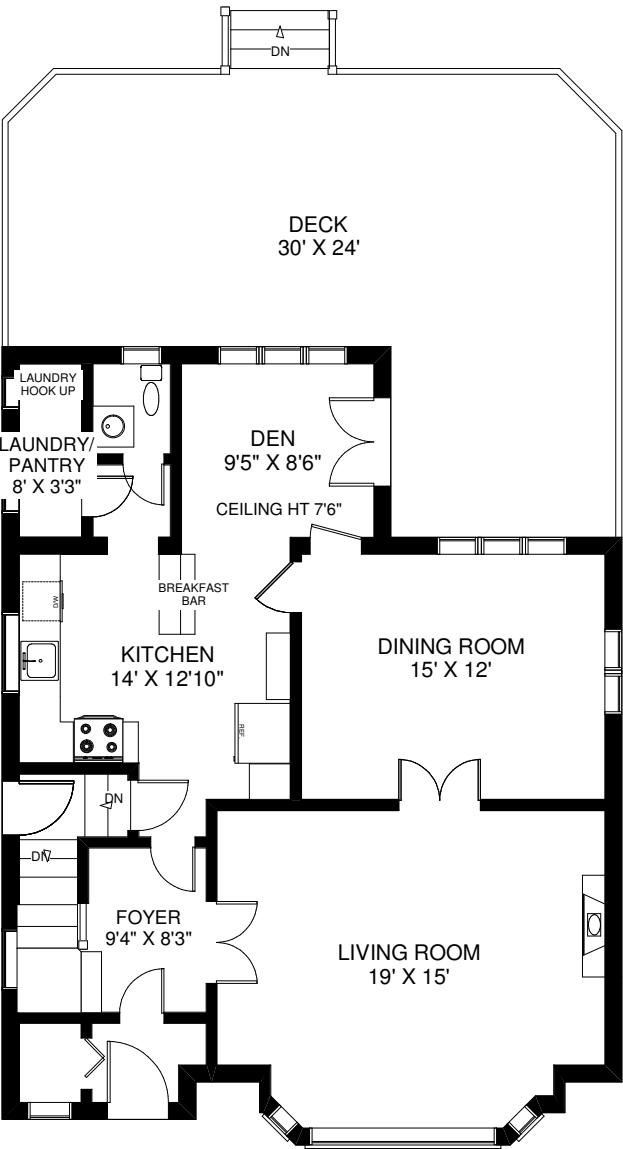
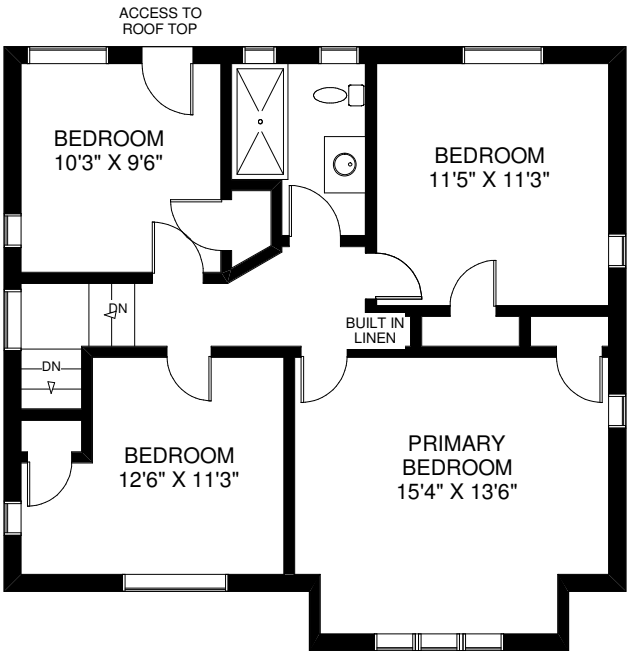
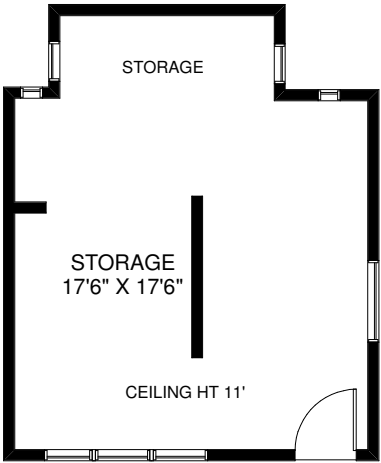


3 LYNNGROVE AVENUE



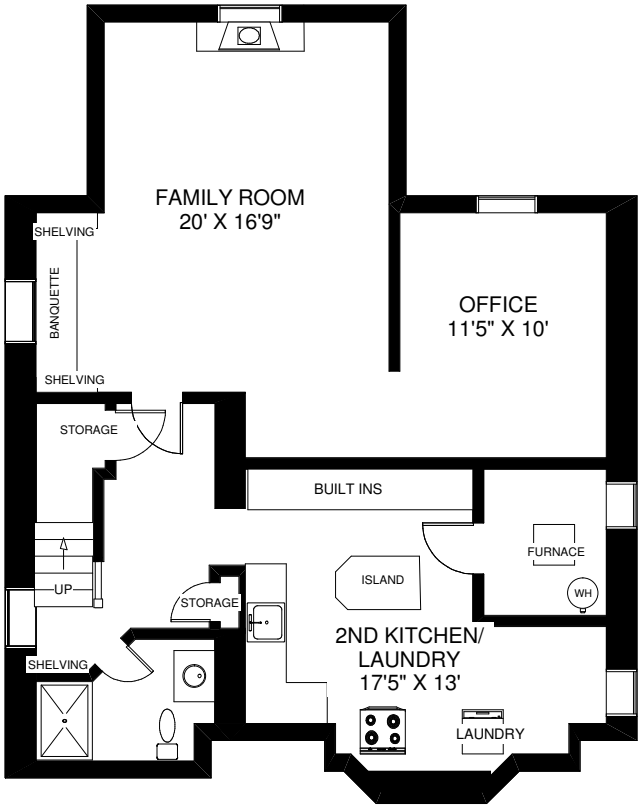
CEILING HT 8'

MAIN FLOOR
APPROXIMATELY 1,050 SQ FT



CEILING HT 7'10"

SECOND FLOOR
APPROXIMATELY 850 SQ FT



CEILING HT 6'5"

LOWER FLOOR
APPROXIMATELY 1,020 SQ FT

Note: Measurements & Calculations are approximate. Provided as a guideline only.