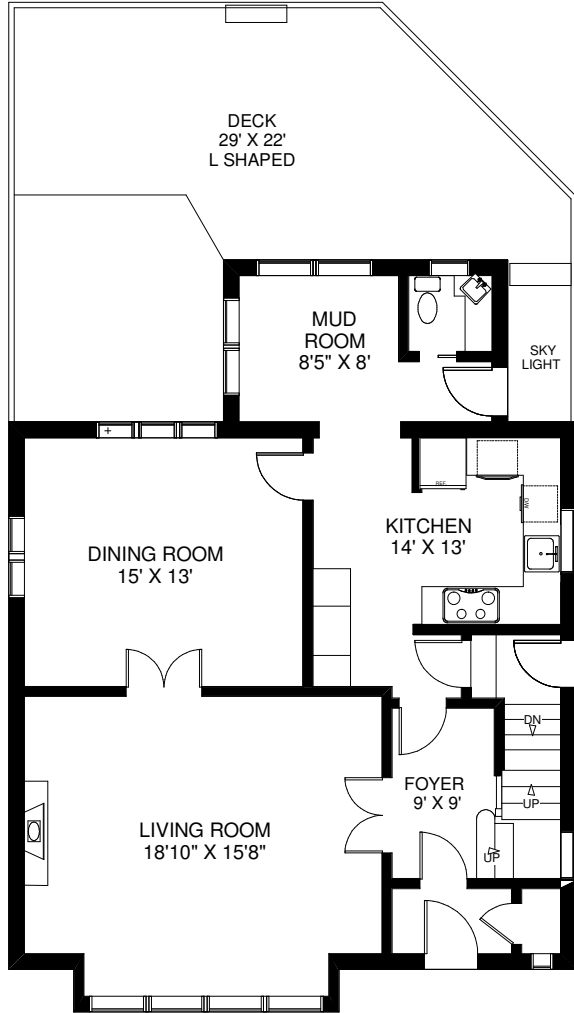
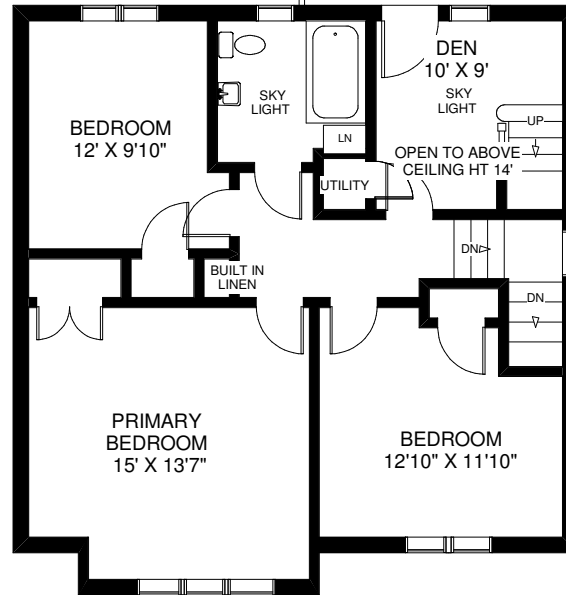


5 PRINCETON ROAD

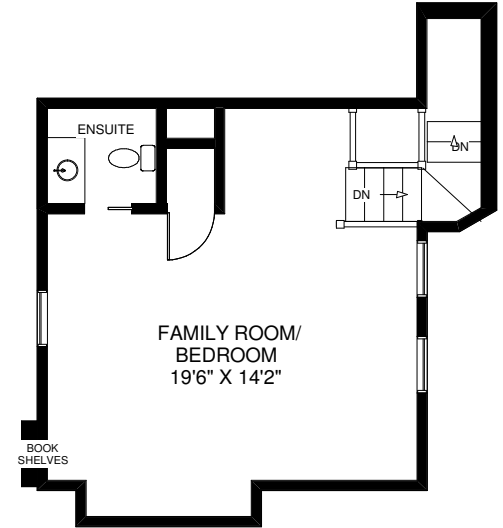


CEILING HT 8'3"
MAIN FLOOR
APPROXIMATELY 1,040 SQ FT

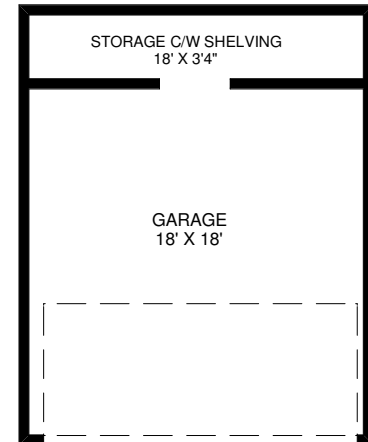
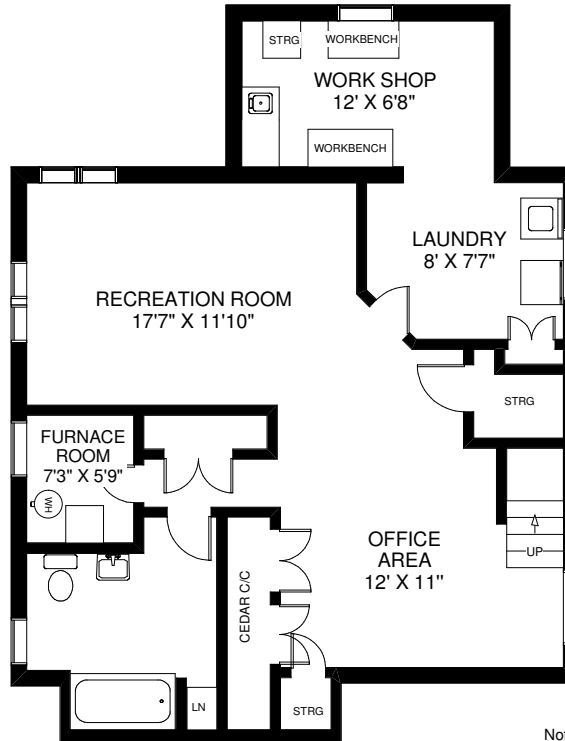
CEILING HT 6'10"
LOWER FLOOR
APPROXIMATELY 1,040 SQ FT



CEILING HT 8'
SECOND FLOOR
APPROXIMATELY 900 SQ FT



CEILING HT 8'2"
THIRD FLOOR
APPROXIMATELY 500 SQ FT



Note: Measurements & Calculations are approximate. Provided as a guideline only.